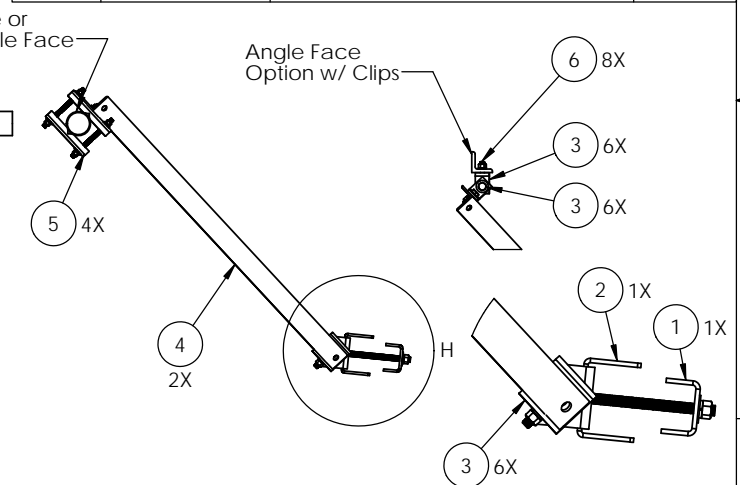
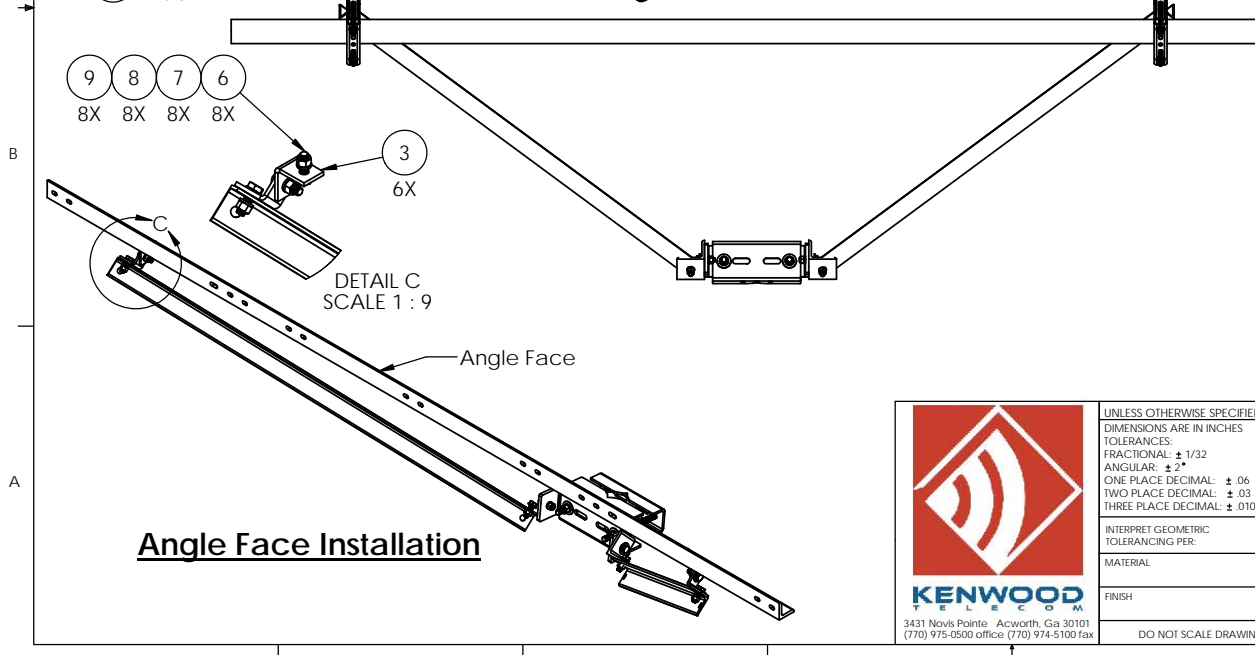


ITEM NO.	PART NUMBER	DESCRIPTION	QTY.
1	K1672KT-04	Leg Channel, Inner (Heavys)	1
2	Z2026KT-08	Leg Channel, Bottom Clamp (Heavys)	1
3	Z2031KT-B	Angle, T-arm Stabilizer	6
4	Z2026KT-07	Support Angle for Stabilizer Kits, 72"	2
5	K1325KT-01	Stiff Arm Channel bracket	4
6	H1029KT2GA3	Bolt, 5/8"x2" (A325) HH, HDG	8
7	H3012KT58GSA3	Flat washer, 5/8", SAE (A325), HDG	8
8	H3002KT58G	Lock washer, 5/8", HDG	8
9	H2002KT58GA3	Nut, 5/8"HH, HDG (A325)	8
10	K2120KT12i	Threaded rod stud, 1/2"x 12" HDG	4
11	H1026KT112GA3	Bolt, 1/2"x1-1/2" (A325) HH HDG	2
12	H2002KT12GA3	Nut, hex heavy 1/2" HDG A325	10
13	H3002KT12G	Lock washer, 1/2" HDG	10
14	H3012KT12GSAE	Flat washer, hardened, 1/2", SAE, HDG	10
15	K2320KT18iA-2	Threaded rod kit 3/4" x 18" (Set of 2) HDG B7	1
16	K1029KT212-2	A325 5/8"x2-1/2" kit (2 ea)	1



UNLESS OTHERWISE SPECIFIED:
 DIMENSIONS ARE IN INCHES
 TOLERANCES:
 FRACTIONAL: ± 1/32
 ANGULAR: ± 2°
 ONE PLACE DECIMAL: ± .06
 TWO PLACE DECIMAL: ± .03
 THREE PLACE DECIMAL: ± .010

INTERPRET GEOMETRIC TOLERANCING PER:
 MATERIAL:
 FINISH:
 DO NOT SCALE DRAWING

NAME: KAR
 DATE: 2/8/17

CHECKED:
 ENG APPR.:
 MFG APPR.:

PROPRIETARY AND CONFIDENTIAL

THE INFORMATION CONTAINED IN THIS DRAWING IS THE SOLE PROPERTY OF KENWOOD TELECOM. ANY REPRODUCTION IN PART OR AS A WHOLE WITHOUT THE WRITTEN PERMISSION OF KENWOOD TELECOM IS PROHIBITED.

KENWOOD TELECOM

TITLE: Stabilizer Kit, Long Standoff for Sector Frame/Stand-off Arm Self Supporting Tower

SIZE: DWG. NO. **Z2026KTLSST** REV **B**

SCALE: 1:18 FINISHED WEIGHT: 82.65 SHEET 1 OF 1